



# DEPPELER

*Signature of excellence*

## THE DEPPELER AESTHETIC INSTRUMENTS SERIES

The ultimate kit for aesthetic composite restorations. Designed by Dr. Martin von Sontagh, specialist in restorative dentistry and expert in endodontics, periodontology, and advanced composite techniques.



# UNIQUE FEATURES

These 100% Swiss-made instruments offer precision, versatility, and visual guidance for anterior and posterior composite restorations. Each tool is designed to sculpt, layer, and refine efficiently for natural, aesthetic results.

Sharp scalpel tip  
for precise excess  
removal

Slides easily into tight  
interproximal spaces

Spreads composite  
like a brush

Unique finest  
premium steel

Notch to recreate mamelons

Trims excess in a single stroke

Hand-finish by watchmaking  
& high-jewellery expert  
artisans

Quality check at each of the  
15 production steps

Ergonomic design with  
easy grip soft handles

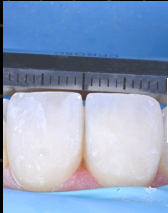


# HOW TO USE THE INSTRUMENTS



## **OP80C+ADEP VC**

This double-sided plugger features a thin edge for meticulous work in tight corners and a wide side for efficient loose fillings. Its unique aspect lies in the 3 and 5 visual guides\*, which facilitate precise composite layering and act as a visualization guide during caries excavation to protect the pulp.



## **CPRO5C+ADEP O**

This flexible spatula, with its conventional design and sharp edges, cuts and shapes composites with precision, ensuring smooth transitions between materials and natural teeth. The visualization guide\* from 1 to 30 can ensure that every smile you create is perfectly aligned.



## **CK10+ADEP J**

This modelling instrument is a dual-purpose tool, ideal for both anterior and posterior applications. Its design facilitates the sculpting of cusps and fissures, minimizing the need for post-modeling adjustments, and features a fine probe for detailed work such as creating mamelons or applying stains.



## **OP43+ADEP BC**

This spatula is an all-in-one instrument. It spreads the material like a brush, easily slides into tight interproximal spaces, and recreates the proper inclination of marginal ridges. When positioned on the incisal edge and moved from mesial to distal, the notch helps trim excess composite and leaves space for natural mamelons and enamel translucency. In the posterior region, the instrument aids in recreating the correct curvature and height of the marginal ridge.

\*Not a measuring instrument, only a visual guide.

# HOW TO ORDER?



## Reference: KITVS+ADEP

The kit is supplied with an autoclavable cassette.

Find your local dealer online: [www.deppeler.ch](http://www.deppeler.ch)

📷 deppeler\_instruments | 📘 Deppeler SA



## *Dr. Martin von Sontagh*

Dr. Martin von Sontagh completed his doctorate at the University of Innsbruck in 2008. Immediately afterwards, he took on an assistant position at a private dental institute in Vorarlberg for two years. During this time, he strengthened his knowledge and was able to specialize in the fields of composites, endodontics and periodontology. Between 2011 and 2013, he worked in a group practice. He has been solely managing the practice since 2013. His treatment specialties include highly aesthetic composite restorations in the posterior and anterior regions, full-mouth rehabilitations, microscopic endodontics and periodontology.