



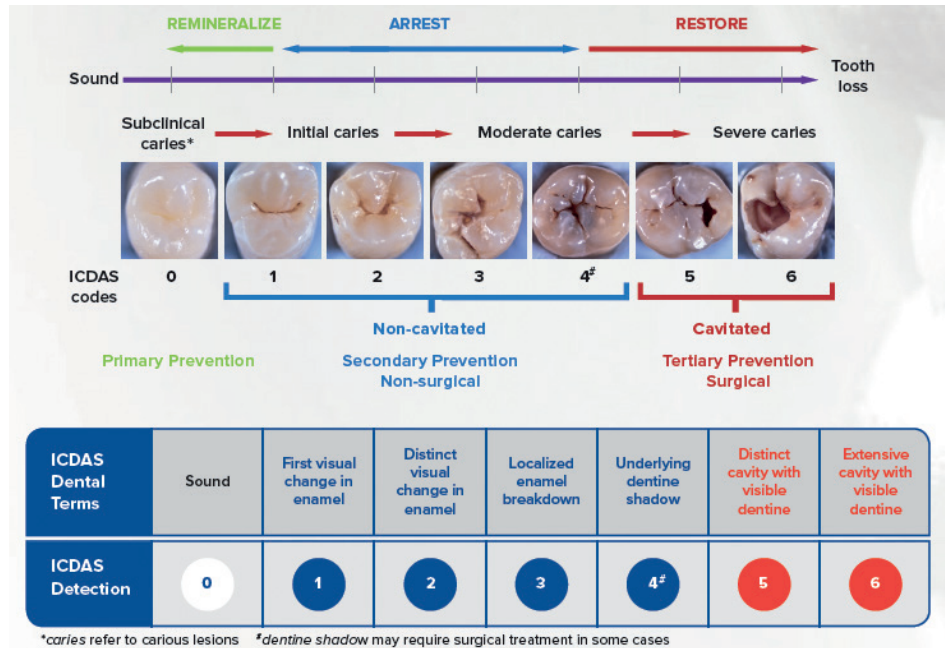
DEPPELER

Signature of excellence

THE SELECTIVE CARIOUS TISSUE REMOVAL KIT



The expression “Selective Caries Removal” (SCR) designates a particular procedure for excavating carious dentin in cavitated teeth, especially at the occlusal level (International caries detection and evaluation system “ICDAS” codes 5 and 6).



Source: FDI

CLINICAL INDICATIONS OF SCR

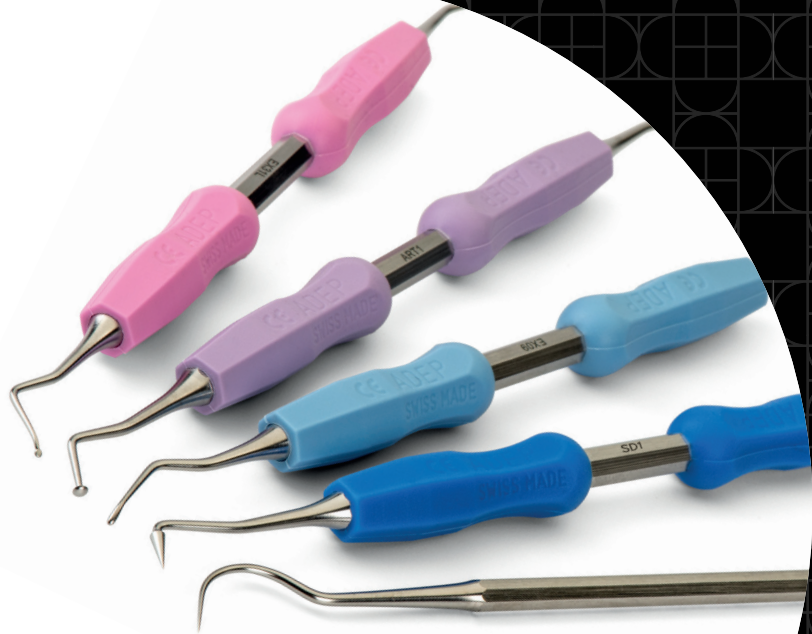
- Very deep carious cavities of permanent teeth, especially if close to the dental pulp.
- Carious cavities of permanent teeth with open apexes in children/adolescents.
- Very deep carious cavities in the baby teeth of infants/children.

THE SCR KIT

The Deppeler SCR kit helps the dentist perform atraumatic and minimally invasive treatments of deep carious cavities, feasible even without anesthesia or drills according to the ART technique (Atraumatic Restorative Treatment).

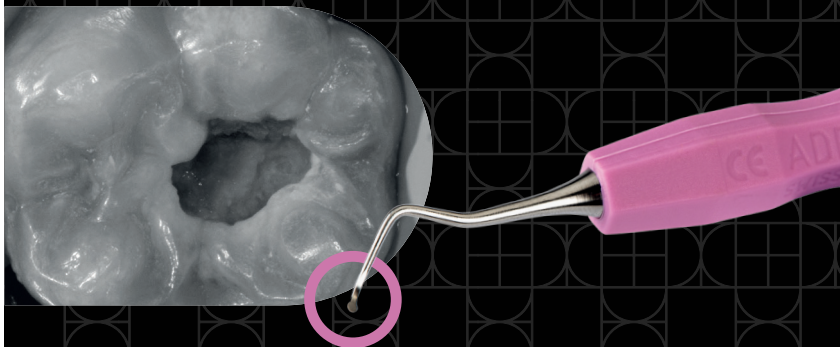
Key advantages

- **Atraumatic** : the uniqueness of ART1 mushroom shape excavator maintains pulpal health by preserving residual dentine and preventing pulp exposure.
- **Minimally invasive** : excavators remove precisely the necessary carious tissue, especially under magnification.
- **Feasible without anesthesia** : so to minimize discomfort/pain and dental anxiety with drills and syringes.



DETAILED PROCEDURE

The procedure consists in removing the carious tissue until reaching the leathery dentine on the floor of the cavity, and the firm one on the axial walls, using hand instruments to make the intervention less invasive.



Step 1

REMOVAL OF INFECTED DENTINE UP TO THE CAVITY FLOOR WITHOUT EXPOSING THE PULP



Watch the video of the technique

SMALL ROUNDED EXCAVATOR

ref. EX31L+ADEP

The size, the rounded shape and the ideal inclination make this excavator particularly suitable for small and large cavities, especially for the molars.

ALONG THE AXIAL WALLS: MUSHROOM-SHAPED EXCAVATOR

ref. ART1+ADEP

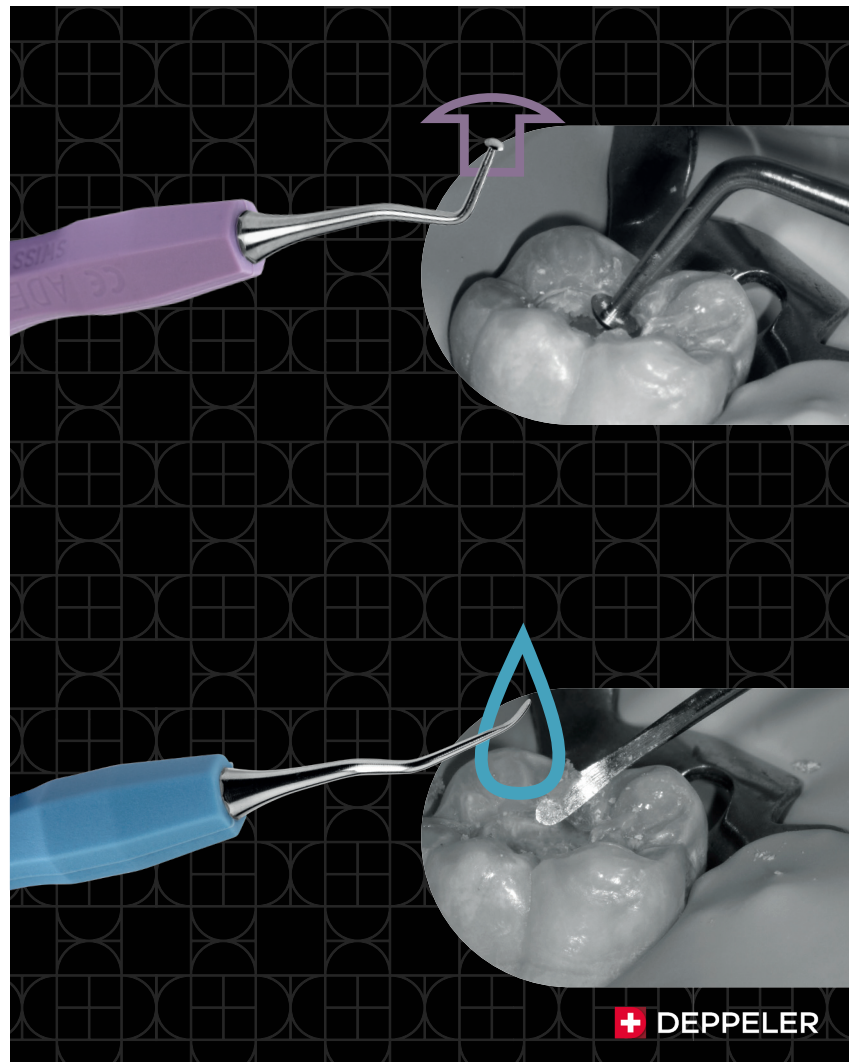
The circular shape perpendicular to the instrument's shaft helps excavate the infected dentin on the axial walls with a continuous movement on the inner circumference of the cavity without changing the inclination of the instrument.

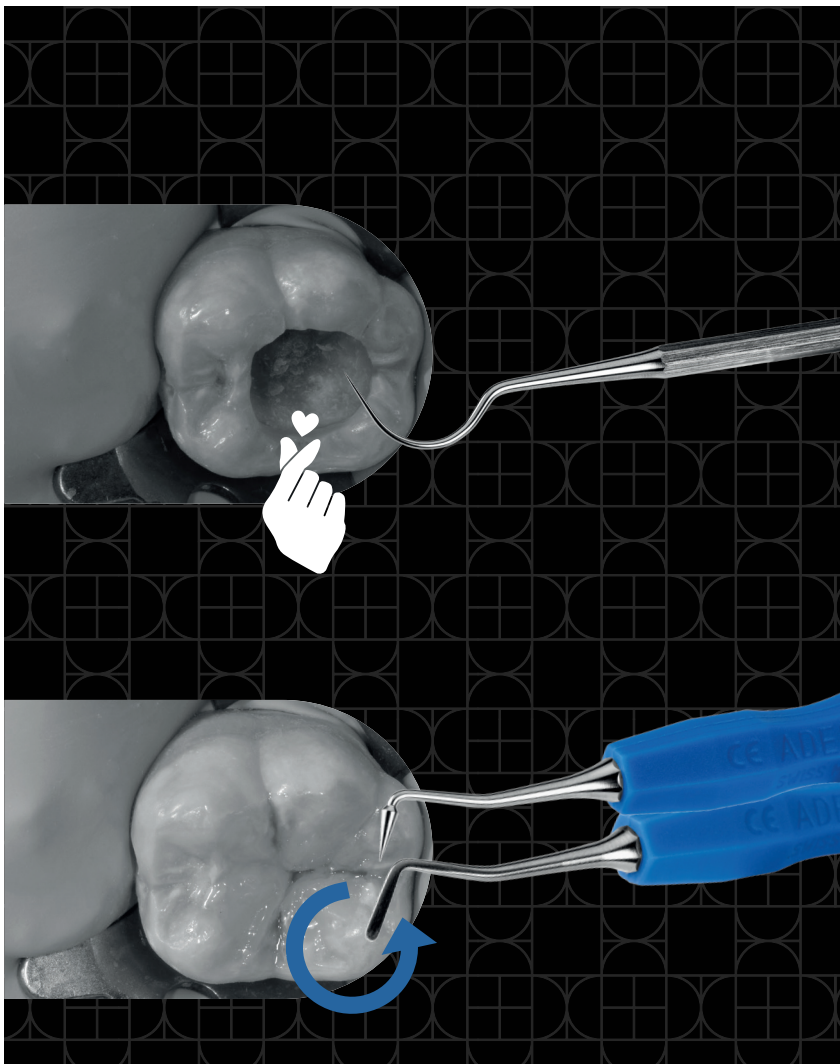


ON DEJ AND CEJ: SMALL WATERDROP SHAPED EXCAVATOR

ref. EX09+ADEP

The small waterdrop shape favors the complete removal of the affected dentin in the areas of difficult access, in particular at the dentine–enamel junction (DEJ) and cervical step (CEJ).





Step 2

EVALUATION OF THE CAVITY AREA

EXPLORER

ref. S23H

The explorer with a wide curve and very pointy tip enables a reliable assessment of the consistency of the dentin.

Step 3

RESTORATION WITH APPLICATION AND SHAPING OF COMPOSITE

SPATULA-BURNISHER

ref. SD1+ADEP

Double-use instrument with a long and thin spatula for applying and layering the restoration material, and a cone tip for a very fluid and precise occlusal modeling of even the smallest anatomical details.



THIS KIT WAS DEVELOPED IN COLLABORATION WITH

Dr. Stefano Daniele

Graduate in Dentistry at Milan's University in 2001.

Post-Graduate University Master at Alma Mater Bologna in "Clinical Restorative Dentistry with minimal intervention".

Visiting Professor at Novara University for teaching Dental Materials and Restorative Dentistry from 2007 to 2014.

Currently, Milan's University Tutor for Restorative Dentistry.

Active member of Italian Society of Conservative Dentistry "SIDOC".

Member of the scientific committee of some Italian dental journals.

Private practice in Milan with specific focus in Restorative Dentistry, Cariology and Preventive Dentistry, fixed Prosthesis.

BIBLIOGRAPHY

- 1) Innes NPT, Frencken JE., Bjorndal L., Maltz M., Manton DJ., Ricketts D., Van Landuyt K., Banerjee A., Campus G., Domejean S., Fontana M., Leal S., Lo E., Machiulskiene V., Schulte A., Splieth C., Zandona A., Schwendicke F.** « Managing carious lesions: consensus recommendations on terminology » *Advance in Dental Research* 2016; 28: 49-57
- 2) Tjaderhane L., Tezvergil-Mutluay A.** « Performance of adhesives and restorative materials after selective removal of carious lesions » *Dent. Clin. N. Am.* 2019; 63: 715-729
- 3) Singh S., Mittal S., Tewari S.** « Effect of different liners on pulpal outcome after partial caries removal: a preliminary 12 months randomized controlled trial » *Caries Res.* 2019; 53(5): 547-554

Order information

KIT REFERENCE: KITSCR+ADEP

INCLUDES

- 'Circle Ex' small rounded excavator | ref. EX31L+ADEP
- 📦 'OddJob Ex' mushroom-shaped excavator | ref. ART1+ADEP
- 💧 'Drop Ex' small waterdrop excavator | ref. EX09+ADEP
- ↻ 'Restore' spatula-burnisher | ref. SD1+ADEP
- 🔦 'Sensor' explorer | ref. S23H
- 📦 Sterilization box | ref. CLEANext B5



WWW.DEPPELER.CH

f DEPPELERSA | @ DEPPELER_INSTRUMENTS



DEPPELER

Signature of excellence